

DIAGNOSI PREECLAMPسيا

Ipertensione + proteinuria

PA sistolica > 140 mmHg

oppure

PA diastolica > 90 mmHg

+

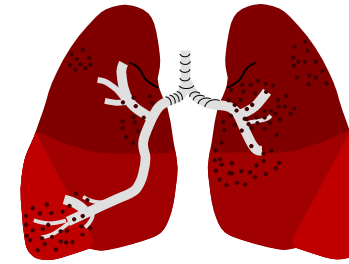
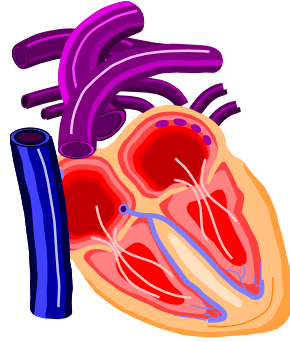
Proteinuria > 0,3 g/24h

In assenza di proteinuria segni e sintomi di malattia sistemica come pistrinopenia, disfunzione epatica, renale, o cerebrale o disturbi visivi.

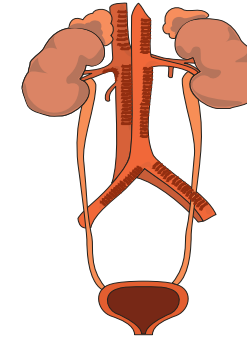
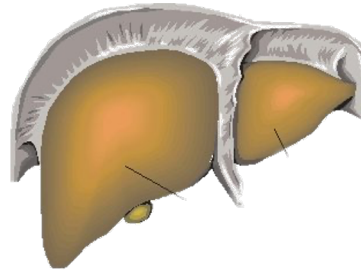
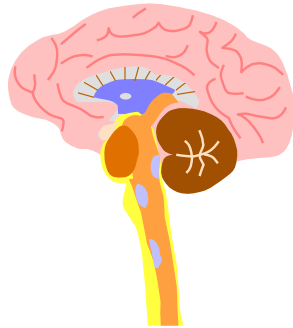
Dopo la 20 sett di gravidanza
in una gestante precedentemente
normotesa



*National High Blood Pressure Education Program Working Group, AJOG 2000
The Society of Obstetricians and Gynaecologist of Canada 2008*



Ipertensione in gravidanza e pre-eclampsia
non sono soltanto ipertensione



Ma una sindrome che può coinvolgere diversi organi